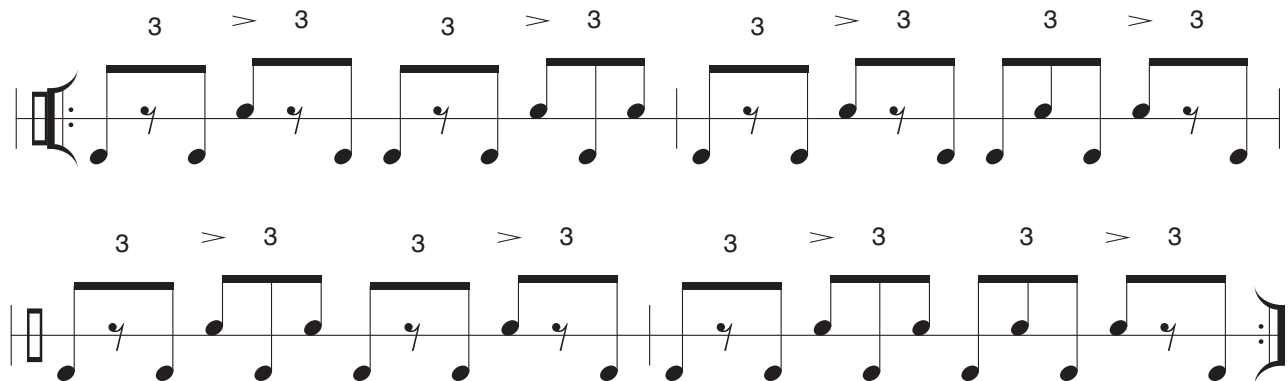


RIM 1230: Proficiency no. 6

Part 1: Rhythm. Perform the rhythm below. Play the lower line with your right hand using a deeper sound (like hitting the table with your fist) to mimic a kick drum. Play the upper line with your left hand using a higher sound (like slapping the table) to mimic a snare drum. You do not have to speak the rhythm syllables, but notice that the rhythm ****REPEATS****. The tempo should be between 80 and 100 BPM, and **you must perform with a click track**.



Part 2: Keyboard. Perform the 12-bar blues piece below with $\hat{1}$ (scale-degree 1) equal to any note except C or A. Play the upper line on the keyboard with your right hand to improvise a minor pentatonic melody (using $\hat{1}$, $\flat\hat{3}$, $\hat{4}$, $\hat{5}$, and $\flat\hat{7}$ only), making sure to ****SWING**** the 8th notes. You must use ALL the notes from the major pentatonic scale somewhere in your right-hand improvisation. Play the bottom line with your left hand, following the scale degrees shown. You can choose any tempo, but **you must perform with a click track**.

SWING 8THS

Improvise a minor pentatonic melody using this rhythm

• • • PLEASE WATCH THE HELP VIDEO FOR THIS PROFICIENCY (ON D2L) • • •

RIM 1230 Proficiency Grading:

You can submit one, unedited video for each part, or you can submit a single video for both parts. **All Proficiency videos MUST BEGIN OR END with you showing your face to the camera and stating your name;** otherwise, you will receive a 0%.

Each of the two parts is graded based on the errors you make for each part total:

- No errors = 100%
- One error = 90%
- Two errors = 80%
- Three errors = 70%
- Four or more errors = 1%

In other words, you will receive no credit if your video contains more than three errors. Rhythms without conducting or drastically under tempo will be scored as having four errors (i.e., 0%). If you need a small tempo modification on the rhythm, that will be graded as one error. Conducting mistakes count toward your error total.

Videos should be uploaded to the Proficiency Hand-in Folder (under “Content”) in D2L.

You may resubmit the Proficiency if you are not satisfied with your original grade. The grading scale for resubmissions is:

- No errors = 90%
- One error = 80%
- Two errors = 70%
- Three errors = 60%
- Four or more errors = 2%

Proficiency parts that are submitted after the due date incur a 10% penalty, as if it is a resubmission. Resubmissions will not incur an additional late penalty.

Proficiency submissions (or resubmissions) will not be accepted after the close date for the assignment.