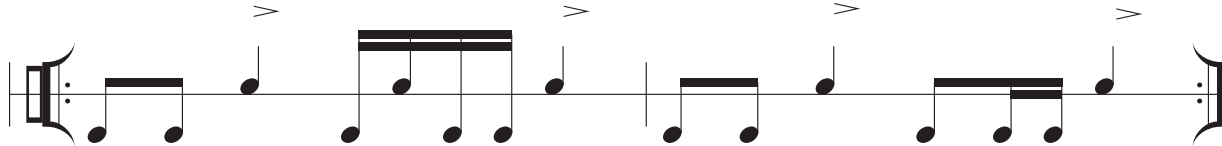
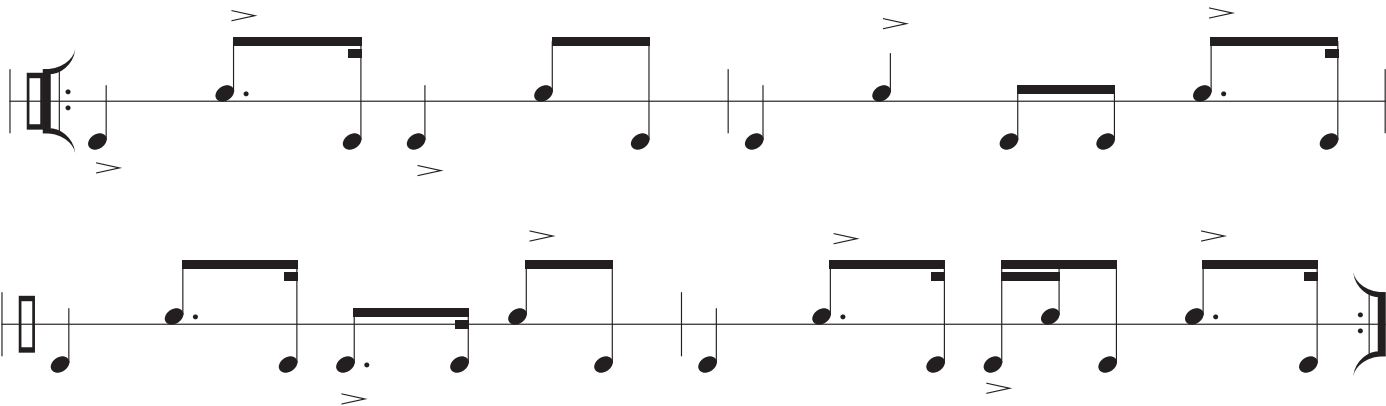


Pattern 7



♩ = 72    Slow Ballad

Pattern 11



Pattern 14

Rock

Musical notation for Pattern 14, Rock style. The pattern is on a single staff with a treble clef. It begins with a double bar line, a repeat sign, and a colon. The melody consists of eighth and quarter notes, with accents (>) on several notes. The pattern ends with a double bar line and a repeat sign.

Pattern 15

♩ = 72 Slow Ballad

Musical notation for Pattern 15, Slow Ballad style. The tempo is marked as ♩ = 72. The pattern is on a single staff with a treble clef. It begins with a double bar line, a repeat sign, and a colon. The melody consists of eighth and quarter notes, with accents (>) on several notes. The pattern ends with a double bar line and a repeat sign.